

PubWorks

The Software For Public Works

we document work



ASSET MANAGEMENT CORE

FLEET MAINTENANCE

WORK ORDERS

SERVICE REQUESTS

CIS MAPVIEWER

GPS ASSET DATA COLLECTOR

COMPREHENSIVE REPORTING

ASSET MANAGEMENT CORE

SERVICE REQUESTS

WORK ORDERS

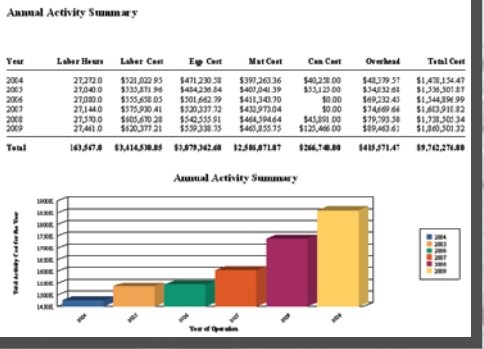
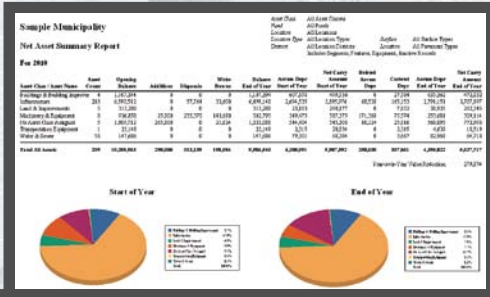
GIS MAP VIEWER

GPS ASSET DATA COLLECTOR

FLEET MAINTENANCE

Service Request Task Cost Detail

Task Code	Task Name	Asset Category	Equipment
111	Sign Repair	Sign	Sign
112	Sign Repair	Sign	Sign
113	Sign Repair	Sign	Sign
114	Sign Repair	Sign	Sign
115	Sign Repair	Sign	Sign
116	Sign Repair	Sign	Sign
117	Sign Repair	Sign	Sign



ASSET MANAGEMENT CORE

PubWorks is comprehensive, GIS-integrated asset management software for public works, road & bridge, parks, highway districts, stormwater/wastewater and forest service operations.

Easy to Implement | Easy to Learn | Easy to Use

In PubWorks, fixed assets are central to the entire system and seamlessly integrated with all other PubWorks modules. Inventory assets, arrange them into their natural hierarchies, create valuation and quality assessments and report on condition, value and maintenance expenditures.

- Create Asset and Equipment Inventories
- Customize Departmental Views/Access
- Track Job Costing and Work History
- Manage Materials/Parts Inventory
- Expedite FEMA Reimbursement
- Track Project Costs

The Asset Management Core is the foundation. Any combination of the additional modules is available.

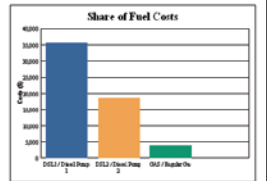
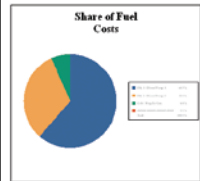


Year	Labour Hours	Labour Cost	Cap Cost	Depreciation
2010	10,662.81	\$1,045.34		
2011	11,066.20	\$1,066.20		

Fuel and Odometer Log

Summary Grouped by Fuel

	Quantity	Fuel Cost	Percentage	
DSL1 / Diesel Pump 1	245 Odometer Log Entries	111,518.00	\$156,609.2	61.27%
DSL1 / Diesel Pump 2	139 Odometer Log Entries	6,892.00	\$18,297.29	31.97%
OAS / Regular Gas	113 Odometer Log Entries	1,470.00	\$39,226.6	6.76%
No fuel information available	228 Odometer Log Entries	0.00	\$0.00	0.00%
758 Odometer Log Entries	218,828.00	\$264,133.07		



Fleet Maintenance Work Order Detail

Work Order #	Year	Make	Model	Year	W.O. #	Department
1071001	10	Isuzu	Isuzu	10	1071001	1071001
1071002	10	Isuzu	Isuzu	10	1071002	1071001

Fleet Maintenance Repair Cost Summary

Grouped by Department

Equip Code	Equipment Name	Odometer Range	Part Cost	Labour Cost	Consumable Cost	Total Cost
4000	2002 Ford Range F350A A	0 - 0	\$0.00	\$1.00	\$219.5	\$220.50
4005	2002 Ford Truck / Truck E	6430 - 0	\$8.00	\$1.00	\$0.00	\$9.00
4005	2002 Ford Range F350A B	0 - 0	\$13.71	\$17.60	\$10.00	\$41.31
4006	2002 Isuzu Truck	20 - 0	\$78.82	\$45.00	\$0.00	\$123.82
7003	2002 Ford Range F350A B	3,599 - 0	\$38.25	\$40.24	\$1,429	\$1,507.49
7003	2002 Isuzu Range Isuzu Max/CB	0 - 0	\$26.23	\$1.00	\$0.00	\$27.23
7005	2002 Toyota Pick Up Landcru	2,298 - 0	\$31.28	\$43.32	\$8.00	\$82.60
7005	2002 Ford F350	0 - 0	\$15.62	\$1.00	\$0.00	\$16.62
Truck Tot:	4000-4006	0	\$1,247.48	\$1,177.68	\$467.84	\$2,893.00
Depreciation:	4000-4006	0	\$97.18	\$197.18	\$0.00	\$294.36
Depreciation:	7003-7005	0	\$1,344.66	\$633.00	\$80.00	\$2,057.66
4010	2002 Toyota Camry 4010A	0 - 0	\$48.25	\$29.13	\$8.00	\$85.38
4010	2002 Toyota Camry 4010A	0 - 0	\$50.71	\$45.00	\$0.00	\$95.71
4010	2002 Toyota Camry 4010A	0 - 0	\$64.37	\$50.13	\$0.00	\$114.50
4010	2002 Toyota Camry 4010A	0 - 0	\$1,298.28	\$1,298.28	\$0.00	\$2,596.56
4011	2002 Ford Truck / 4011	3,499 - 0	\$1,348.64	\$1,348.64	\$1,677.23	\$4,374.51
4012	2002 Ford Truck / 4012	1,200 - 0	\$45.64	\$1,378.00	\$1,279.12	\$3,102.76
4013	2002 Ford Truck / 4013	1,670 - 0	\$6,359.19	\$1,336.94	\$25.00	\$8,020.13
4014	2002 Ford Truck / 4014	1,200 - 0	\$4,253.95	\$1,783.81	\$0.00	\$6,037.76
4015	2002 Ford Truck / 4015	254,476 - 0	\$1,824.27	\$1,824.27	\$2,428.64	\$6,077.18
4016	2002 Ford Truck / 4016	1,000 - 0	\$1,403.89	\$1,403.89	\$74.64	\$3,282.42
4017	2002 Ford Truck / 4017	133,295 - 0	\$1,394.35	\$1,394.35	\$4,287.29	\$7,076.00
7004	2002 Dodge T4 F180C	0 - 0	\$1,276.36	\$1,276.36	\$0.00	\$2,552.72
7006	2002 Dodge T4 F180C	0 - 0	\$1,662.98	\$936.89	\$1,244.68	\$3,844.55
7007	2002 Dodge T4 F180C	0 - 0	\$1,248.99	\$1,248.99	\$0.00	\$2,497.98
7008	2002 Dodge T4 F180C	0 - 0	\$112.05	\$111.80	\$68.28	\$292.13
7008	2002 Ford A37 Truck / 7008	0 - 0	\$1,089.34	\$0.00	\$0.00	\$1,089.34
Truck Tot:	4010-4017	0	\$13,818.32	\$13,818.32	\$46,747.41	\$121,374.05
Depreciation:	4010-4017	0	\$1,328.24	\$1,328.24	\$0.00	\$2,656.48

FLEET MAINTENANCE

Track all fuel, parts and labor expenditures for your vehicle and equipment fleet. Requiring only minutes per day, the tracking is easy to implement and utilize.

- Create and Manage Parts Inventory
- Track Service History
- Report on Maintenance Costs
- Create Preventative Maintenance Schedules
- Interface with Any Fuel System
- Track Depreciation and Replacement
- Report Repair Orders by Department, Vehicle Type and Maintenance Category
- Calculate Productivity by Tracking Standard/Flat-Rate Work Hours



The timely and accurate billing of other departments for services rendered is a key feature of the PubWorks Fleet Maintenance module.

Year	Labour Hours	Labour Cost	Cap Cost
2003	36,682.8	\$1,310,045.34	
2009	57,546.3	\$1,844,686.20	
2014	41,709.9	\$1,255,550.51	
2016	36,888.2	\$1,244,519.87	

Public Works

Service Request

Task Code

Task Code

Task Code

Task Code

Task Code

Task Code

Task Code

Task Code

Task Code

Task Code

Task Code

Task Code

Task Code

Task Code

Task Code

Task Code

Task Code

Service Request Details

Number: 8320
 Date: 2/13/2010 11:12:00AM
 Status: Open
 Assigner: Public Works
 Department: Public Works
 Type: Potholes
 Estimated By: [Name]
 Priority: [Priority]
 Ready: [Status]
 Busy: [Status]

Location: 8320 Lane North West
 Street Address: [Address]

Description: Potholes overlarge

Service Request Distribution By Type

Type	Call Count	Average Duration (days)	Average Duration (hours)	Percentage
Trim	30	18.72	480.29	2.75%
Sweep	1	-0.16	-3.87	0.09%
Repaint	13	48.71	1,169.02	1.20%
Repair	855	20.02	480.46	79.76%
Restripe	36	21.66	519.89	3.30%
Pack up	11	1.31	31.43	0.98%
Mow	17	6.70	160.91	1.56%
Milling	1	5.98	143.50	0.09%
Mark Lateral	1	2.19	52.65	0.09%
Lorain Utility	17	44.43	1,066.79	1.54%
Build	62	38.99	943.74	5.62%
General Maintenance	9	61.17	1,468.15	0.83%
Clean	22	7.87	188.86	2.02%
Brush Hog	1	1.08	25.93	0.09%
Build	1	158.78	3,810.75	0.09%
Total Service Request	1,877	21.14	507.81	

Service Request Distribution By Type

- Trim: 2.75%
- Sweep: 0.09%
- Repaint: 1.20%
- Repair: 79.76%
- Restripe: 3.30%
- Pack up: 0.98%
- Mow: 1.56%
- Milling: 0.09%
- Mark Lateral: 0.09%
- Lorain Utility: 1.54%
- Build: 5.62%
- General Maintenance: 0.83%
- Clean: 2.02%
- Brush Hog: 0.09%
- Build: 0.09%
- Total: 100.0%

SERVICE REQUESTS

Improve responsiveness with proactive management of service requests. From the reception of the call through to the work order and onto completion, service requests can be managed in a timely manner, reducing the risk of requests falling through the cracks.

- Assign Calls by Employee and/or Department
- Monitor Costs and Progress
- Identify Trouble Spots and Trends
- Respond to Citizens with Instant and Accurate Information
- Web and Email Enabled

PubWorks is designed to track the service request details that make up the bigger picture, such as the cost of the maintenance performed.

Tying maintenance cost directly to the asset is critical to effectively managing each asset individually as it relates to service requests and your overall operation.



SERVICE REQUESTS

Year Labor Hours Labor Cost Equip Cost

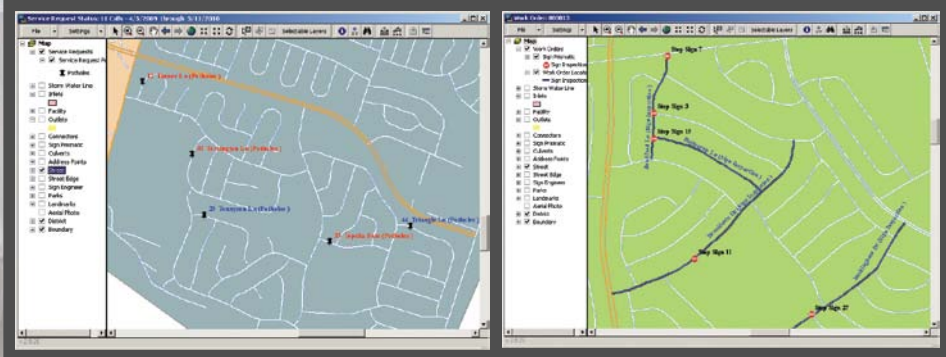
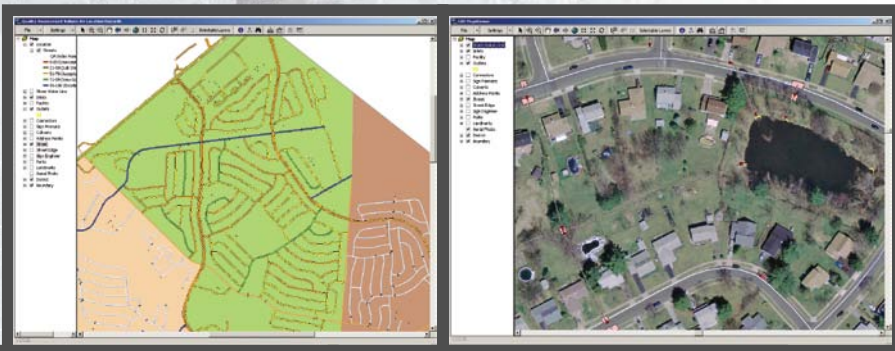
2012 1,000 100,000 10,000

Public Works

Service Request Task Cost Detail

Request Number	Request Description	Request Category	Request Status
1001	Street Repair	Street	Open
1002	Sign Repair	Sign	Open
1003	Light Repair	Light	Open
1004	Sign Repair	Sign	Open
1005	Sign Repair	Sign	Open

Task Code	Task Name	Equipment
101	Sign Repair	Sign
102	Sign Repair	Sign
103	Sign Repair	Sign
104	Sign Repair	Sign
105	Sign Repair	Sign



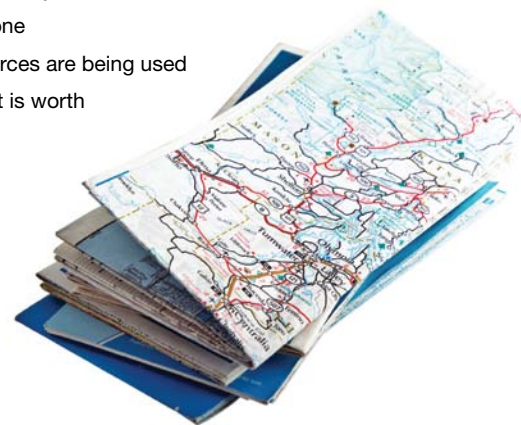
GIS MAPVIEWER

The MapViewer allows you to map any and all appropriate data held in PubWorks. The ability to map information makes comprehension instant and communication direct. A map makes otherwise tedious or complicated data easy to evaluate and understand.

- Map **Service Requests** to pin-point trouble spots and trends
- Map **Work Orders** to monitor progress and improve efficiency
- Map **Job Costs** to visualize where the work is getting done
- Map **Equipment and Materials** to see where your resources are being used
- Map **Assets** to take control of what you have and what it is worth
- Resolve issues of jurisdiction

Secure, real time, two-way GIS-integration is available.

No GIS? ESRI StreetMap Data is available.



PubWorks is an ESRI Development Partner.



we document work

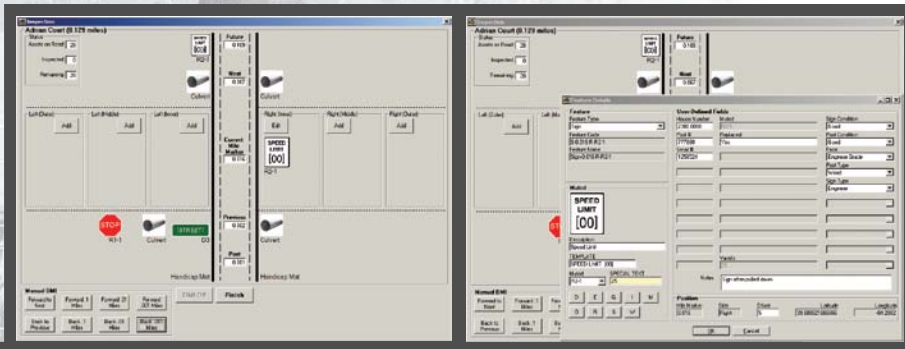
PubWorks' MapViewer has streamlined our daily operations. With map-based job assignments, crews are cutting time and fuel costs by logistically organizing their daily tasks... amazing!—Adrienne Bell, Miami Township Public Works, OH

GIS MAPVIEWER

Public Works
Service Request Task Cost Detail

Task Code Task Name

Task Code	Task Name
111	Sign Repair
112	Sign Repair
113	Sign Repair
114	Sign Repair
115	Sign Repair
116	Sign Repair
117	Sign Repair
118	Sign Repair
119	Sign Repair
120	Sign Repair



Inspection Log

Inspection #	Location	Employee	Complete?	Inspection Date	Inspection Cnt	Last Mile	Synch Status
11	Edgar Street	Adrianna Bell	Y	12/17/08	12	0.208	Y
12	Seneca/2nd St	Adrianna Bell	Y	12/18/08	16	0.136	Y
13	Myra Lane	Adrianna Bell	Y	12/17/08	16	0.136	Y
14	Southside Way	Adrianna Bell	Y	12/17/08	26	0.260	Y
15	Edgewood Drive	Adrianna Bell	Y	12/17/08	15	0.150	Y
16	Blackbird Court	Adrianna Bell	Y	12/17/08	6	0.060	Y
17	Hendley Lane	Adrianna Bell	Y	12/17/08	27	0.270	Y
18	Edgar Court	Adrianna Bell	Y	12/18/08	4	0.040	Y
19	Quinn Cross Rd	Adrianna Bell	Y	12/18/08	40	0.400	Y
20	Paul Court	Adrianna Bell	Y	12/18/08	6	0.060	Y
21	Rosenfich Way	Adrianna Bell	Y	12/18/08	6	0.120	Y
22	Phyllis Court	Adrianna Bell	Y	12/18/08	4	0.080	Y
23	Rudolph Lane	Adrianna Bell	Y	12/18/08	16	0.220	Y
24	Old Dixie Lane	Adrianna Bell	Y	12/18/08	14	0.190	Y
25	Blackburn Court	Adrianna Bell	Y	12/18/08	5	0.040	Y
26	Phyllis Lane	Adrianna Bell	Y	12/18/08	17	0.330	Y
27	Clay Court	Adrianna Bell	Y	12/18/08	4	0.090	Y
28	Wood Thrush Court	Adrianna Bell	Y	12/18/08	10	0.110	Y
29	King Bird Lane	Adrianna Bell	Y	12/18/08	11	0.120	Y
30	King Bird Lane	Adrianna Bell	Y	12/18/08	14	0.200	Y

Synchronize to Main Database

Results

(13) New Records created...
 (4) Foreign Keys Updated...
 (8) Char Records updated...
 (2) Dec Records updated...
 (2) Int Records updated...
 (0) Records deleted...
 (1) Inspection Records copied...
 28 Audit Entries processed...
 Disconnecting from both DB's...

Create Archive copy of ADC DB...
 ADC Synchronization finished

Synchronize Build New Database

GPS ASSET DATA COLLECTOR

With our Drive-the-Road Interface, inventory and inspect fixed assets from the safety and comfort of your vehicle. PubWorks customers are collecting assets and asset condition status more quickly, accurately and cost effectively with this technology.

- Connect to your vehicle-installed DMI and/or mobile GPS antenna
- Inventory any asset that exists on your road or street network
- Perform inspections and assessments of signs, streets, culverts, and all other assets
- Synchronize and create PubWorks data with a single click
- Go out with questions, return with answers

Over 20 days and 249 road miles in Reno County, Kansas, the following assets were collected for about \$.81 per asset.

- 216 Bridges
- 1,823 Signs
- 1,776 Entrances
- 1,048 Culverts
- 5,015 Total Assets



GPS ASSET DATA COLLECTOR

Since 1997, PubWorks has been recognized as easy-to-use, comprehensive and cost-effective software—helping cities and counties better manage resources, costs and operations.

PubWorks now serves over 350 counties and municipalities across the United States and Canada making it easy for managers to document work—an essential best management practice.

For a demonstration or more information please visit, write or call:

www.PubWorks.com

info@PubWorks.com

888-920-0380



we document work